



Christmas Newsletter

December 2012



**MERRY CHRISTMAS & A VERY HAPPY NEW YEAR
TO ALL OUR FRIENDS AND SUPPORTERS
FROM THE ASDOG MANAGEMENT COMMITTEE...**



As another year rolls to a close, the ASDOG Management Committee would like to thank all of you, our wonderful donors, members, supporters, puppy raisers and volunteers for your continued support over the past 12 months. In November 2012, we held our AGM where all committee positions were filled, and we look forward to continuing our rewarding work through 2013.



2012 has been another very busy year for ASDOG, bringing both heartache and joy.

Our wonderful young dog, Bennett, and puppy Daisy were both removed from the assistance dog program at the beginning of the year due to their poor PennHip scores (the screening procedure for potential hip dysplasia). Sadly Daisy had other problems too, but Bennett (*pictured with Daisy left*) is very happy and well in his new home with Andrea and her family, and we will continue to bring you Benni's news from time to time.



Black Labrador sibling puppies Charlie and Chelsea soon joined the program, and shortly afterwards Ebony. Jacqui and her family took on the task of puppy-raising Charlie, and Ann raised both Chelsea and Ebony. Charlie and Chelsea are pictured (*left*) soon after they arrived, and all three dogs can be seen (*right*) enjoying a café break during a public access outing with Training Coordinator, Pauline.



A week ago, we welcomed new puppy Freya, a beautiful cream female Labrador, to the ASDOG team. She is pictured (*left*) with retired assistance dog Cassie, who still does so much for ASDOG in her retirement. We are once again grateful to puppy raiser Ann who will be guiding Freya through her first 12 months.

Puppies Ebony and Charlie have now graduated from puppy-raising and are undergoing their Assistance Dog Training in the care of Ann and Graham respectively (*pictured on the left of the group photo, Ann holding Ebony*). Gayl began training Chelsea (*pictured holding her on the right of the group photo*), but it became apparent that there was a problem and the vet confirmed Chelsea was profoundly deaf. Chelsea has left the Assistance Dog program, but has found a wonderful new home with Jacqui and her family.





We are pleased to advise that all our accredited recipient-assistance dog teams have passed their recent annual assessments. This comprises a Public Access Test set by Assistance Dogs International, which ensures dogs have maintained an exceptional level of obedience and temperament in the public arena, and a customised ASDOG Partnership Evaluation which is a check of the dog's health, welfare and skills.

Spinal Cord Injuries Australia has collaborated with ASDOG to produce a short DVD showing how assistance dogs enhance the independence and safety of recipients. In the DVD, ASDOG veterans Barnaby and Jade demonstrate their repertoire of skills at home, around the shopping centre and in the workplace. The DVD is available to view at www.scia.org.au/what-next.

The ASDOG Management Committee for 2013:

Danielle Press, *President*
Joan Minns, *Vice President*
Susan Watson, *Secretary*
Mitchell Hilder, *Treasurer*
Ann Barnacoat
Danielle Johnke
Hannah Elstub
Sheree Hurley
Sue Elstub

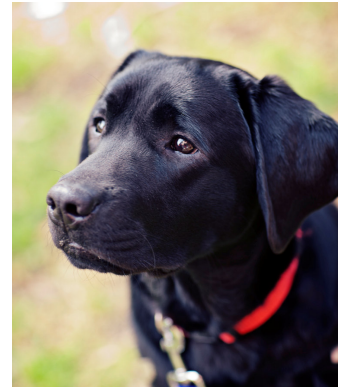
Meetings are held monthly at the Belrose Bowling Club, Forest Way, Belrose



Also this year the Management Committee undertook the process of renewal of our website content and materials. We are currently liaising with the designers as they finalise construction of the new ASDOG website which will allow for easier navigation and greater interaction.

Regretfully Pauline Dickerson has advised us she will be stepping down from her role as Training Coordinator at the end of 2013. Pauline has made a significant contribution to ASDOG, not only

in training our dogs, but also working with the Management Committee on various issues and continuous improvement of our training manuals. She will work with our trainers throughout 2013, passing on to them as much of her dog training knowledge and skills over the next year as she can. We thank her very much for all her work for and on behalf of ASDOG, and are looking forward to one more year...



Once again, the ASDOG Management Committee would like to take this opportunity to thank our donors, sponsors and volunteers for their support throughout 2012. The generosity of public donation has enabled us to purchase puppies, pay their veterinary, health and training expenses, conduct recipient training programs and public access tests, attend a range of community events and educational presentations to raise ASDOG's profile.

The fantastic photographs on this page were all taken for us by Nina Beilby at a recent ASDOG demonstration at Sydney University (*more on this next newsletter...*).

Danielle Press
*President, ASDOG
Management Committee*



ASDOG Collection Boxes

Our charity collection boxes are currently situated in the following locations. We greatly appreciate the generous assistance of the proprietors of these establishments. If you are near one of these establishments, please support them as they have supported Asdog. Thank you.

Cakes and Creams Cafe
455 Marrickville Road, Dulwich Hill, NSW 2203

Gladesville Veterinary Hospital
449 Victoria Road, Gladesville, NSW 2111

Ku-ring-gai Veterinary Hospital
290 Bobbin Head Road, North Turramurra
NSW 2074

Roy Young Chemist
Shop 441, Westfield Centre, 1 Anderson
Street, Chatswood, NSW 2067

Pats Coffee Shop
97 Bay Road, Waverton, NSW 2060

**To all wonderful donors, members, supporters, puppy raisers and volunteers - thank you very much.
We wish you all a very Merry Christmas and a Happy New Year!**